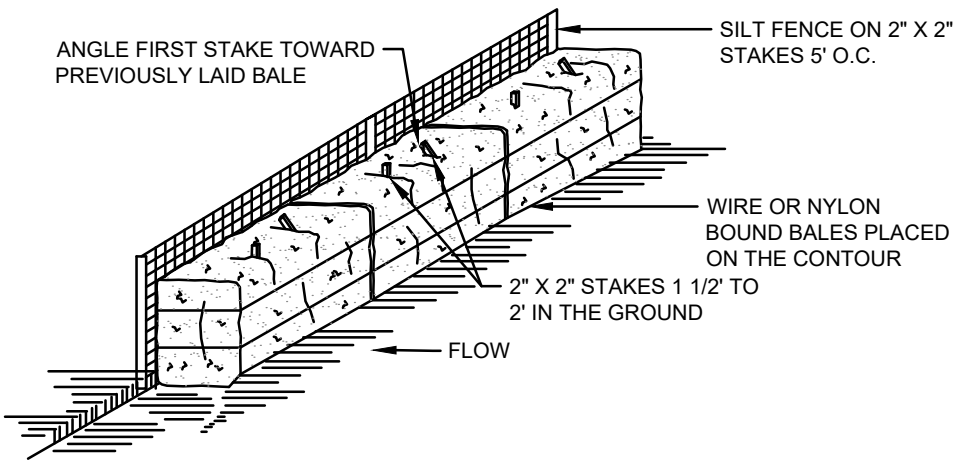
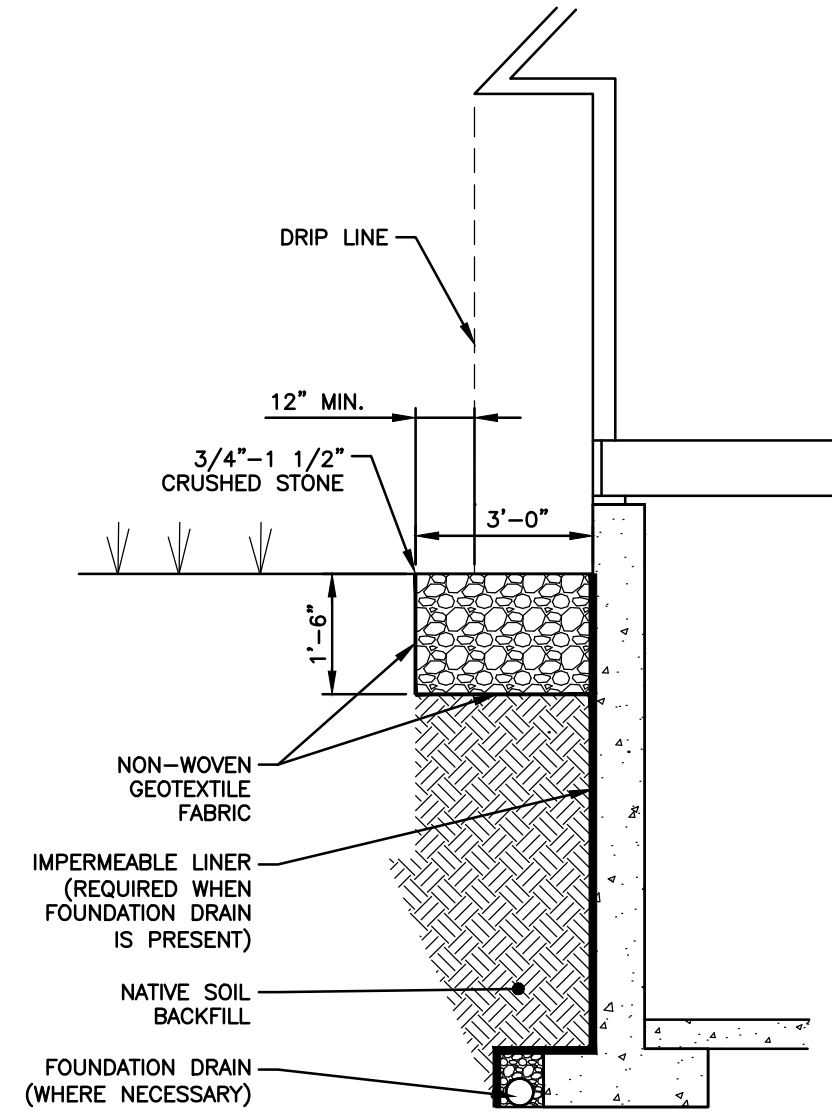


TABLE OF ZONING REGULATIONS - (METHUEN, MA)		
ZONE: LIMITED INDUSTRIAL (IL)		
DESCRIPTION	REQUIRED	PROVIDED
MINIMUM LOT AREA	40,000 S.F.	135,635 S.F.
MINIMUM LOT FRONTAGE	100'	271.05'
MINIMUM FRONT YARD BUILDING SETBACK	60'	48.5' (EXISTING)
MINIMUM SIDE YARD BUILDING SETBACK	30'	3" (PROP. OUTBUILDING)
MINIMUM REAR YARD BUILDING SETBACK	30'	144' (EXISTING)
MINIMUM BUILDING HEIGHT	45'	45'
MAXIMUM LOT COVERAGE	35%	29.8%
RESIDENTIAL BUFFER	60'	3" (PROP. OUTBUILDING)
MINIMUM NUMBER PARKING SPACES	WAREHOUSE (29,935 SF) 1 SPACE PER 1,200 SF GFA X 29,935 = 25 SPACES	28 SPACES

\*COMPLIES WITH VARIANCE GRANTED ON NOVEMBER 20, 2024, CASE #2024-17 TO ALLOW A SIDE SETBACK OF 0.5' (6").



**HAY BALE & SILT FENCE BARRIER**  
NOT TO SCALE



**STONE DRIP EDGE**  
NOT TO SCALE

S45°56'27"W  
3.07'  
(TIE LINE)

EXISTING LOT  
LINE TO BE  
ELIMINATED

**PARCEL ID:  
410-124-14F**  
EXISTING  
68,701 Sq.Ft.  
1.577 Ac.±  
PROPOSED  
135,638 Sq.Ft.  
3.114 Ac.±

WETLANDS DELINEATED BY  
NORSE ENVIRONMENTAL  
SERVICES, INC. ON  
FEBRUARY 2, 2024

STORAGE  
CONTAINER  
WF 18B  
(TO BE REMOVED)

CONCRETE  
PAD (TYP.)  
(TO REMAIN)

DECK W/  
STEPS

CONCRETE  
PAD (TYP.)

1 SPACE

4 SPACES

WF 9B

WF 7B

WF 6B

WF 5B

WF 4B

WF 3B

WF 2B

WF 1B

WF 10A

WF 11A

WF 12A

WF 13A

WF 14A

WF 15A

WF 16A

WF 17A

WF 18A

WF 19A

WF 20A

WF 21A

WF 22A

WF 23A

WF 24A

WF 25A

WF 26A

WF 27A

WF 28A

WF 29A

WF 30A

WF 31A

WF 32A

WF 33A

WF 34A

WF 35A

WF 36A

WF 37A

WF 38A

WF 39A

WF 40A

WF 41A

WF 42A

WF 43A

WF 44A

WF 45A

WF 46A

WF 47A

WF 48A

WF 49A

WF 50A

WF 51A

WF 52A

WF 53A

WF 54A

WF 55A

WF 56A

WF 57A

WF 58A

WF 59A

WF 60A

WF 61A

WF 62A

WF 63A

WF 64A

WF 65A

WF 66A

WF 67A

WF 68A

WF 69A

WF 70A

WF 71A

WF 72A

WF 73A

WF 74A

WF 75A

WF 76A

WF 77A

WF 78A

WF 79A

WF 80A

WF 81A

WF 82A

WF 83A

WF 84A

WF 85A

WF 86A

WF 87A

WF 88A

WF 89A

WF 90A

WF 91A

WF 92A

WF 93A

WF 94A

WF 95A

WF 96A

WF 97A

WF 98A

WF 99A

WF 100A

WF 101A

WF 102A

WF 103A

WF 104A

WF 105A

WF 106A

WF 107A

WF 108A

WF 109A

WF 110A

WF 111A

WF 112A

WF 113A

WF 114A

WF 115A

WF 116A

WF 117A

WF 118A

WF 119A

WF 120A

WF 121A

WF 122A

WF 123A

WF 124A

WF 125A

WF 126A

WF 127A

WF 128A

WF 129A

WF 130A

WF 131A

WF 132A

WF 133A

WF 134A

WF 135A

WF 136A

WF 137A

WF 138A

WF 139A

WF 140A

WF 141A

WF 142A

WF 143A

WF 144A

WF 145A

WF 146A

WF 147A

WF 148A

WF 149A

WF 150A

WF 151A

WF 152A

WF 153A

WF 154A

WF 155A

WF 156A

WF 157A

WF 158A

WF 159A

WF 160A

WF 161A

WF 162A

WF 163A

WF 164A

WF 165A

WF 166A

WF 167A

WF 168A

WF 169A

WF 170A

WF 171A

WF 172A

WF 173A

WF 174A

WF 175A

WF 176A

WF 177A

WF 178A

WF 179A

WF 180A

WF 181A

WF 182A

WF 183A

WF 184A

WF 185A

WF 186A

WF 187A

WF 188A

WF 189A

WF 190A

WF 191A

WF 192A

WF 193A

WF 194A

WF 195A

WF 196A

WF 197A

WF 198A

WF 199A

WF 200A

WF 201A

WF 202A

WF 203A

WF 204A

WF 205A

WF 206A

WF 207A

WF 208A

WF 209A

WF 210A

WF 211A

WF 212A

WF 213A

WF 214A

WF 215A

WF 216A

WF 217A

WF 218A

WF 219A

WF 220A

WF 221A

WF 222A

WF 223A

WF 224A

WF 225A

WF 226A

WF 227A

WF 228A

WF 229A

WF 230A

WF 231A

WF 232A

WF 233A

WF 234A

WF 235A

WF 236A

WF 237A

WF 238A

WF 239A

WF 240A

WF 241A

WF 242A

WF 243A

WF 244A

WF 245A

WF 246A

WF 247A

WF 248A

WF 249A

WF 250A

WF 251A

WF 252A

WF 253A

WF 254A

WF 255A

WF 256A

WF 257A

WF 258A

WF 259A

WF 260A

WF 261A

WF 262A

WF 263A

WF 264A

WF 265A

WF 266A

WF 267A

WF 268A

WF 269A

WF 270A

WF 271A

WF 272A

WF 273A

WF 274A

WF 275A